



MANAGE YOUR COMPLEX POWER PORTFOLIO WITH ELEKTRA

Trying to cram electricity into an ETRM built for another commodity? At Molecule, we know that just doesn't work well.

Molecule was born in power. Elektra, our power markets add-on, enables independent power producers, hedge funds, hedge advisors, and power utilities to manage the complexities of their portfolios.

POWERFUL CAPABILITIES, ADAPTED TO TODAY'S MARKETS

As energy markets continue shifting, you need an ETRM that adapts to your shifting risk management needs. This requires access to near real-time data for hedging positions in the real-time and day-ahead power markets.

Molecule + Elektra provides automated and transparent visibility into P&L, position, and risk exposure for a large variety of power trades - all in one modern, easy-to-use ETRM platform.

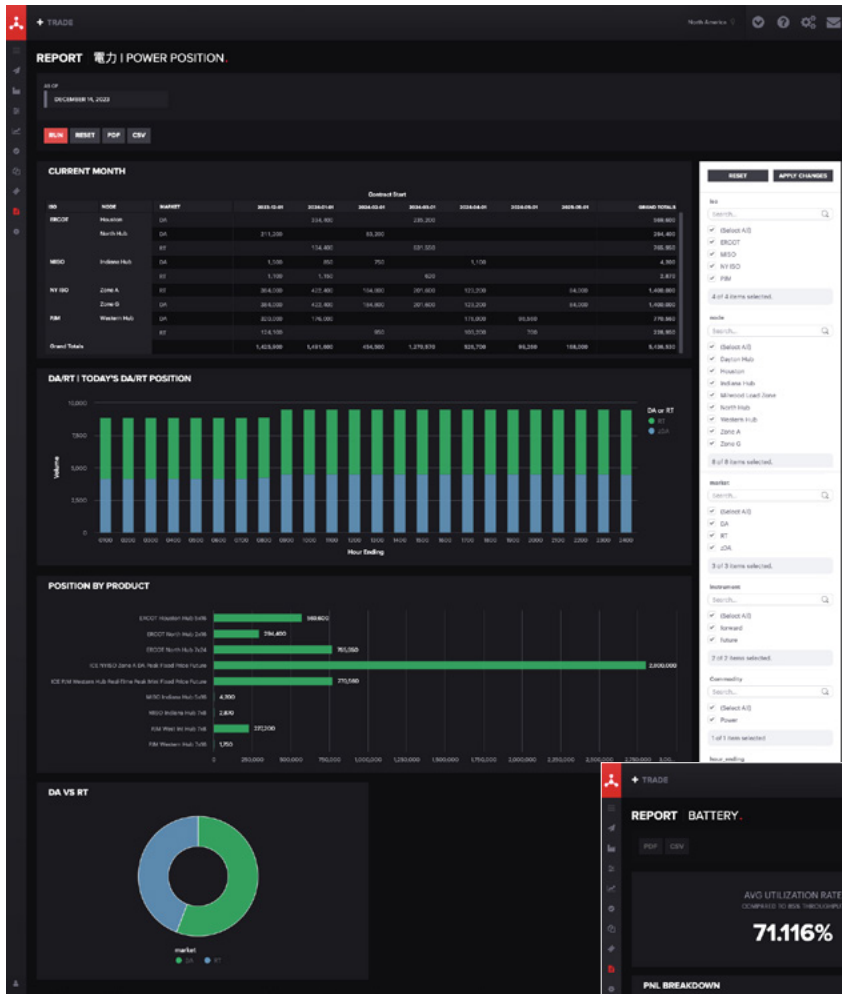
For your portfolio of generation, fuel, and everything in between, Molecule already offers comprehensive block interpretation logic, as well as support for a variety of instruments traded on (and around) North American ISOs. RECs, RGGIs, FTRs, and virtuals all have a home in Molecule.

In addition to everything Molecule has to offer, Elektra also provides:

- Added ISO connectivity, arbitrary block conversions (i.e., 7x24 to 5x16-equivalence), and more — all specifically for physical and financial power
- Easy management of Peak and Off-Peak trades, market curves, positions, and risk exposures for a variety of RTOs/ISOs
- Trade/delivery integrations with North American ISOs, including ERCOT, PJM, ISO-NE, MISO, NYISO, SPP, CAISO, AESO
- End-of-day LMPs and other electricity pricing data, powered by NRGSTREAM
- Ability to track FTRs, CRRs, PTPs, ancillaries, and virtuals
- Hourly date-of-flow granularity so you can understand your portfolio the way you think about it

Ready to amp up your portfolio risk management?
Discover the power of Elektra at molecule.io/elektra





- Elektra connects to all North American ISO's for efficient and reliable power position tracking in Day Ahead and Real Time markets.
- Elektra's embedded block logic framework allows trades to be compiled to summary positions or broken down to minute-by-minute granularity.
- Elektra connects to NRGStream to download hourly power prices for all North American power grids and uses the same block logic framework to convert and value trades at various granularities.

- Track contracted and actual loads and discharges on energy storage assets.
- Account for load costs and discharge revenues to calculate unit and asset P&L.
- Compare asset utilization rates to battery throughput to assess performance and efficiency.

